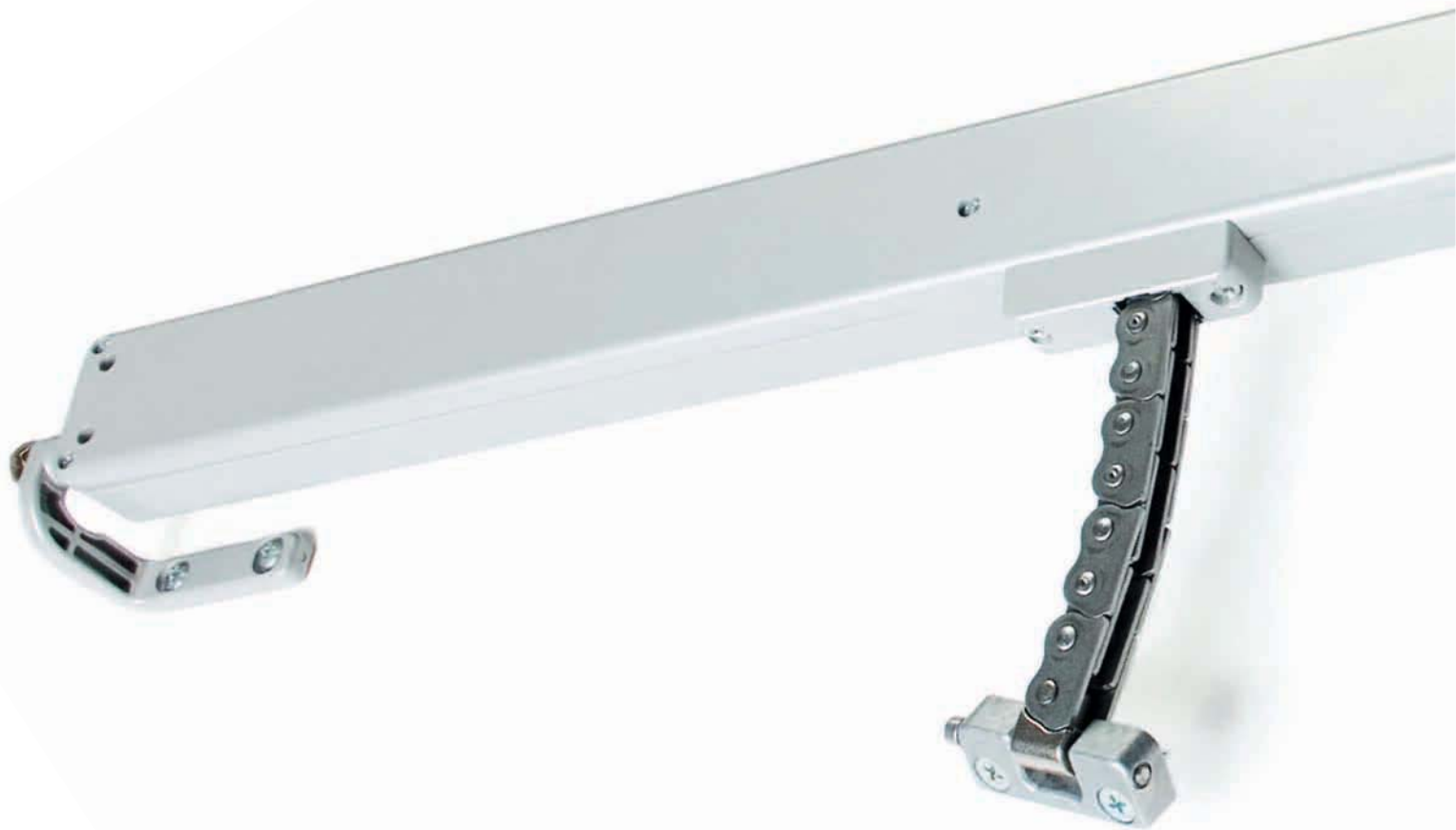



QUASAR - SYNCHRO QUASAR

Chain actuator - Force in push action 300 N - Maximum stroke 500 mm

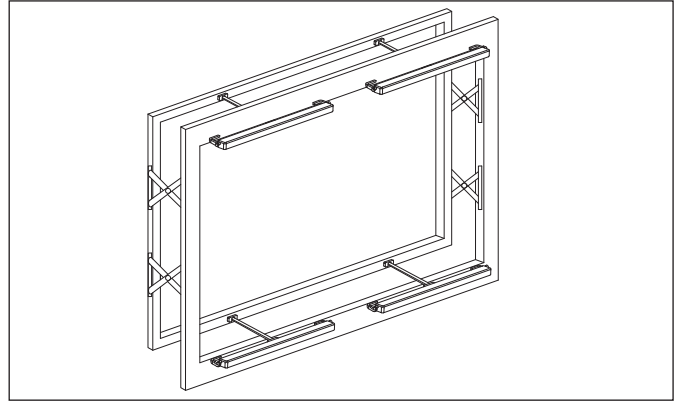
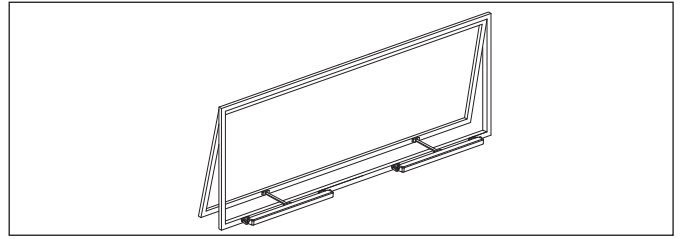


- Highest performance in minimum size: the die-cast aluminium casing has a very small section (47 x 32 mm) and can be easily built-in into the frame of curtain walls.
- Chain in double stainless steel links.
- Chain exit in central position.
- Quick and easy installation: the manual closing position regulation is not required, avoiding possible mistake. The stop in closing position is regulated by an electronic limit switch control.
- If installed on PVC windows, the profile has to be reinforced.
- Electronic stop in the intermediate positions in case of overload.
- Supplied with 1,5 m cable (**QUASAR**) or 3 m (**SYNCHRO QUASAR**) and pivoting brackets.
- The installation without brackets is possible for windows with pivoting hinges only if the vent height is at least 1500 mm.
- In case of vents with four-bar hinges, please contact our Technical Dept.
- 24 Vdc version is suitable for installation on **Smoke and Heat Extraction Systems** in conformity to UNI EN 12101-2 Standard, QUASAR DC approved by **Istituto Giordano** (test report 243340).
-  version is available on request for some models.
- **SYNCHRO QUASAR** version is equipped with an integrated speed synchronization control board that allows the mounting of more than one actuator on the same vent, avoiding the installation of an external control panel. **AC version:** Synchro Quasar AC + max 1 Synchro Quasar DC, **DC version:** max 4 synchro Quasar DC.
- In case of BMS-Building Management System avoid repetitive commands in the same direction. For further information contact our Tech. Dept.
- Available on request Synchro version with force level (push or pull) and different speeds (fixed or selectable between maximum and limited speeds). Speed reduction enable quiet actuators.
- **QUASAR DC F-SIGNAL** and **SYNCHRO QUASAR DC F-SIGNAL** are special versions with opening and closing feedback signal (free potential, maintained contact), activated by the current limit. **SYNCHRO QUASAR DC F-SIGNAL** is provided with additional cable.
- For a higher resistance against atmospheric agents, it is available on request the Quasar DC version with protection class **IP32**.

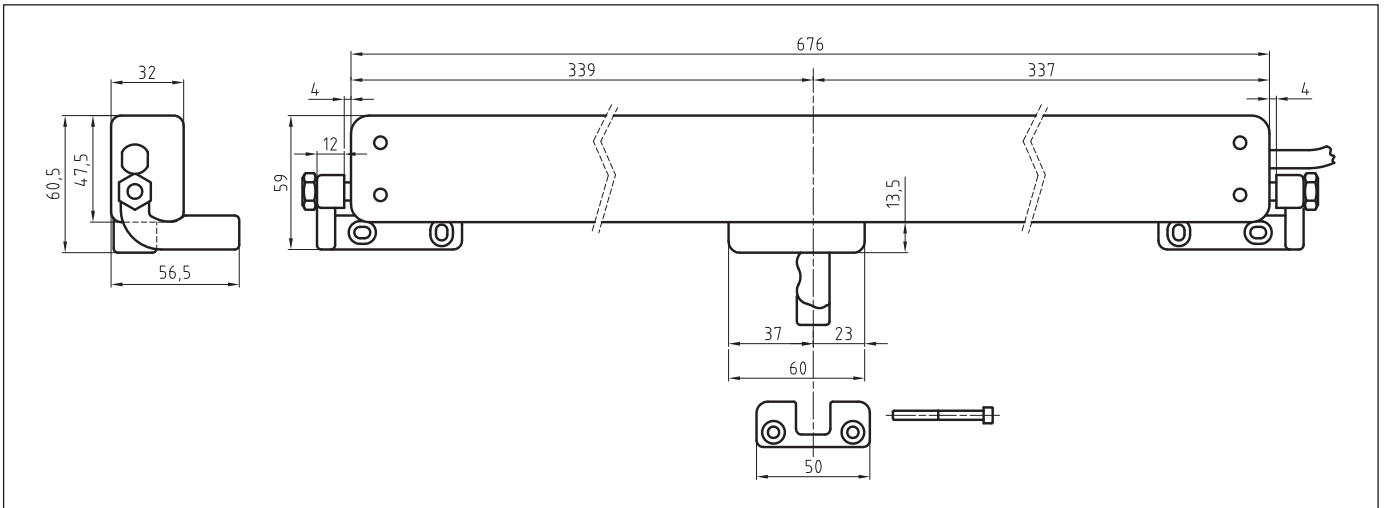


VOLTAGE SUPPLY	QUASAR AC 100 Vac – 240 Vac	QUASAR DC 24 Vdc ± 10%	QUASAR DC F-SIGNAL 24 Vdc ± 10%
ELECTRIC CONNECTION	3 wires + earth	2 wires	5 wires
OPERATION		by polarity inversion	by polarity inversion
STROKE	500 mm	500 mm	500 mm
FORCE (push and pull action)	300N	300N	300N
SPEED	~ 15 mm/s	~ 15 mm/s	~ 15 mm/s
CURRENT ABSORPTION (with max load)	0,4 A – 0,2 A	0,9 A	0,9 A
PARALLEL CONNECTION	YES	YES	YES
LIMIT STOP	Electronic	Electronic	Electronic
SAFETY STOP	Electronic	Electronic	Electronic
FEEDBACK SIGNAL			Open/close
PROTECTION CLASS	IP30	IP30	IP30
Part No.			
GREY RAL 9006	40837Z	40840C	41327T
BLACK RAL 9005	40838A	40841D	41328U
WHITE RAL 9010	40839B	40842E	41329V
VOLTAGE SUPPLY	SYNCHRO QUASAR AC 100 Vac – 240 Vac	SYNCHRO QUASAR DC 24 Vdc ± 10%	SYNCHRO QUASAR DC F-SIGNAL 24 Vdc ± 10%
ELECTRIC CONNECTION	3 wires + earth + 5 wires	5 wires	5 wires + 3 wires
OPERATION		by polarity inversion	by polarity inversion
STROKE	500 mm	500 mm	500 mm
FORCE (push and pull action)	300 N	300 N	300 N
SPEED	~ 15 mm/s	~ 15 mm/s	~ 15 mm/s
CURRENT ABSORPTION (with max load)	0,4 A – 0,2 A*	0,9 A	0,9 A
PARALLEL CONNECTION	YES	YES	YES
LIMIT STOP	Electronic	Electronic	Electronic
SAFETY STOP	Electronic	Electronic	Electronic
FEEDBACK SIGNAL			Open/close
PROTECTION CLASS	IP30	IP30	IP30
Part No.			
GREY RAL 9006	41316I	41119Z	41319L
BLACK RAL 9005	41317J	41120A	41320M
WHITE RAL 9010	41318K	41121B	41321N

* If connected to a Synchro Quasar DC current, absorption is double

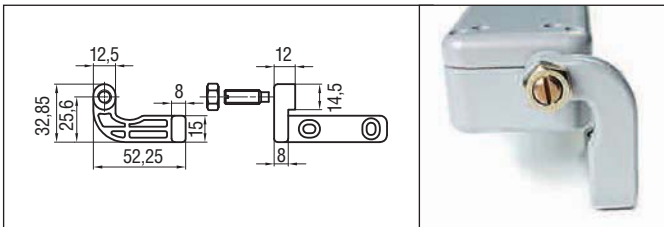


Synchro Quasar installation examples

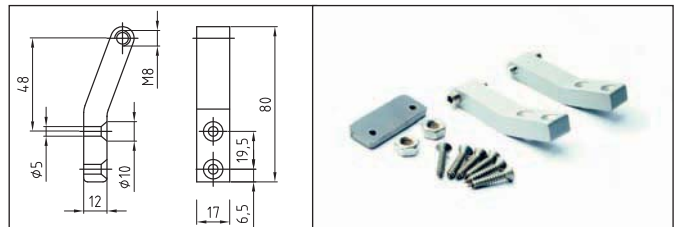


Actuators dimensions

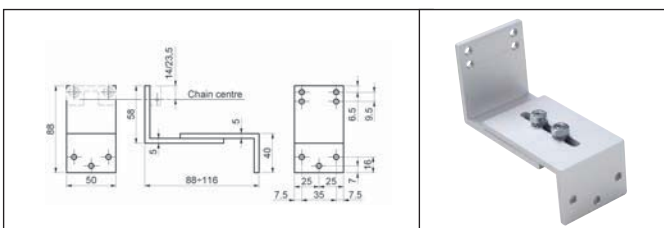
Accessories



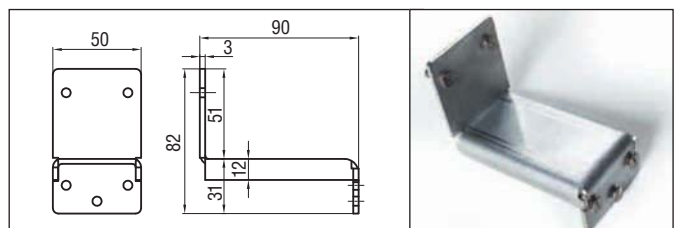
Pivoting brackets kit (included)



Long brackets kit (to be ordered separately)
 GREY painted RAL 9006 part no. 40941H
 BLACK painted RAL 9005 part no. 40942I
 WHITE painted RAL 9010 part no. 40943J

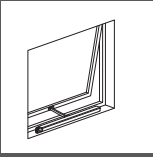


Aluminium adjustable "Z" bracket for bottom hinged window part no. 41200C

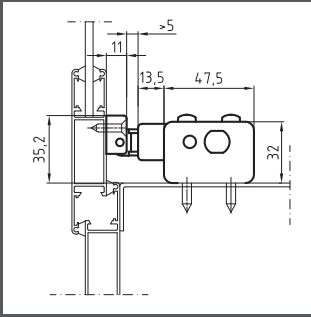


Stainless steel bottom hinged window bracket part No. 40858U

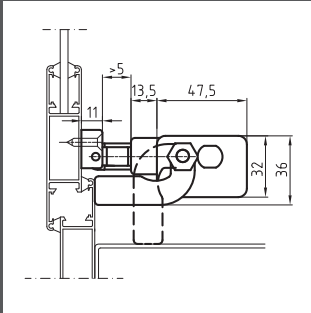
Installation examples



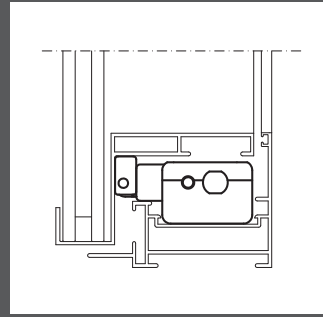
Top hinged windows



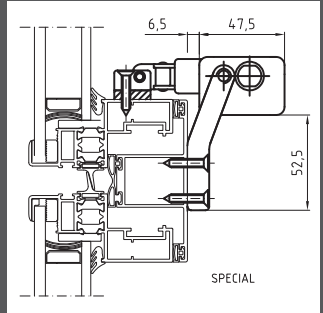
On windows with windowsill



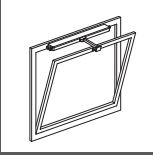
On windows with or without windowsill with pivoting brackets kit included



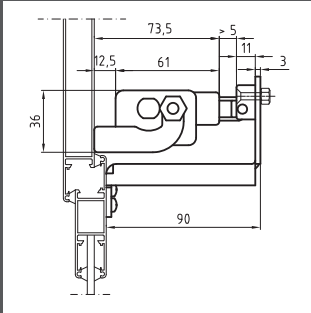
Inside a curtain wall frame



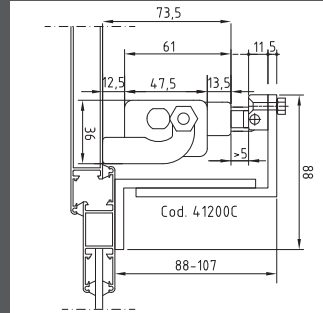
With long brackets kit



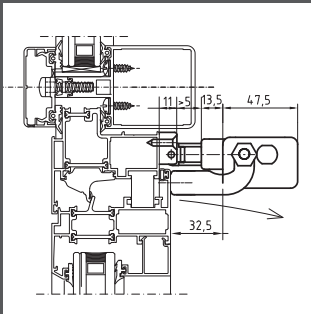
Bottom hinged windows



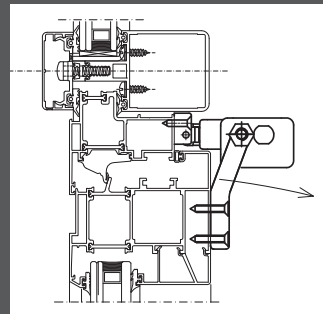
On the frame with pivoting brackets kit and bracket for bottom hinged windows part No. 40858U



On the frame with adjustable "Z" bracket part No.41200C



On the vent with pivoting brackets kit included



On the vent with long brackets kit

⚠ The instructions for a safe installation are included in the section "SECURITY WARNINGS"

SPECIFICATION PROSPECTS

Electric chain actuator Ultraflex Control Systems named Quasar with chain in double stainless steel links.

Voltage supply: from 100 to 240 Vac or 24 Vdc – Electronic limit stop; electronic stop in the intermediate positions in case of overload. Casing in painted die-cast aluminium with very small section (47x32 mm). Pivoting brackets included.

The 100-230 Vac version and the 24 Vdc version are conform to 2004/108/CE, the 100-240 Vac version is conform also to 2006/95/CE directive.

Electric chain actuator Ultraflex Control Systems named Synchro-Quasar with chain in double stainless steel links. Suitable for mounting more than one actuators (max 4 actuators) on the same vent.

Voltage supply: from 100 to 240 Vac or 24 Vdc – Electronic limit stop; speed control; electronic stop in the intermediate positions in case of overload. Casing in painted die-cast aluminium with very small section (47x32 mm). Pivoting brackets included.

The 100-240 Vac and the 24 Vdc version are conform to 2004/108/CE directives, the 100-240 Vac version is conform also to 2006/95/CE directive.